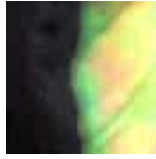


Glossary of Shells

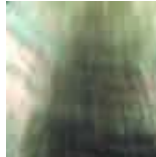
- Baby Abalone shell



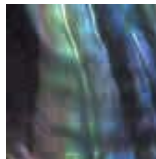
- Baby Penguin



- Black Lip Oyster



- Black Shell



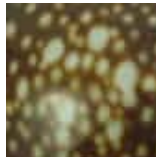
- Blue Shell



- Conus Shell



- Cowry Shell



- Eye of Sheba



- Nautilus/Sandolah



- Gastropod



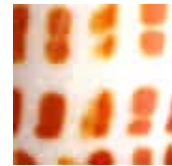
- Gold Mop



- Honey Cowry shell



- Mitra Mitra



- Mitra Fraga



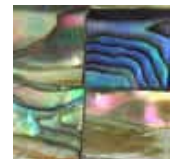
- Mother of Pearl



- Paua



- Paua



- Periwinkle



- Blue Clam Shell



- Tanea Shell



- Tiger Cowry Shell



Glossary of Pearls

Freshwater & Seed Pearls

Pearls occurring in mussels, not oysters, and found in freshwater lakes and rivers. They grow into many shapes, including "rice," "button," "winged," "oval," and "flake," and have a milky translucent appearance. They have been found most often in Japan and China.



Natural Pearls

Pearls that grow without human interference.



Biwa Pearls

Cultured freshwater pearls that are grown in Lake Biwa, Japan.



Baroque Pearls

It is a term used to describe irregularly-shaped pearls.



Cultured Pearls

Our pearls are made of cultured pearls. It is made when human intentionally inserts foreign tissue into a living oyster.



Blister Pearls

Cultured pearls that grow attached to the shell's surface. Blister pearls frequently form in irregular shapes.



Mabé Pearls

These pearls are formed when a half-bead is inserted into the mollusc's inner shellfish. Sometimes referred to as cultured blister pearls.

